

modal_music_001

download_MM_001

- MM_001_A.mp4
- MM_001_B.mp4
- MM_001_C.mp4
- MM_001_D.mp4
- MM_001_E.mp4

Tuba

1 8 7 6 2 3 4 5

The first staff of music for the Tuba part is written in treble clef. It contains eight notes: G2 (fingering 1), A2 (fingering 8), B2 (fingering 7), C3 (fingering 6), D3 (fingering 2), E3 (fingering 3), F3 (fingering 4), and G3 (fingering 5). The notes are written as half notes, and the staff ends with a double bar line.

♩ = 120

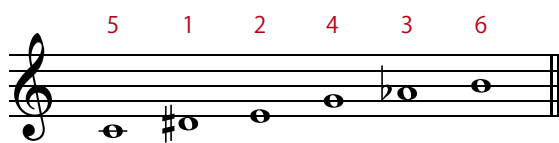
1 2 3 4 5 6 7 8 1

The second staff of music for the Tuba part is written in bass clef. It contains nine notes: G2 (fingering 1), A2 (fingering 2), B2 (fingering 3), C3 (fingering 4), D3 (fingering 5), E3 (fingering 6), F3 (fingering 7), G3 (fingering 8), and A3 (fingering 1). The notes are written as eighth notes, and the staff begins with a *mf* dynamic marking.

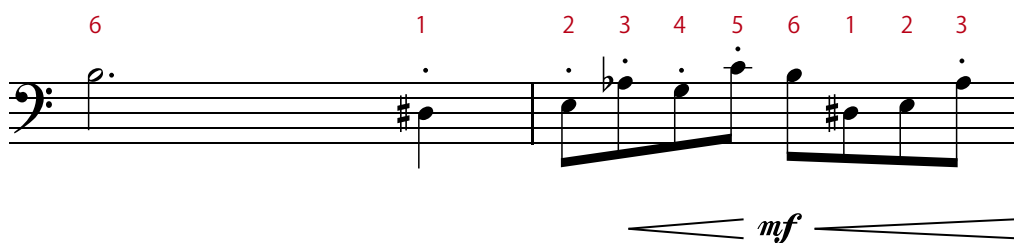
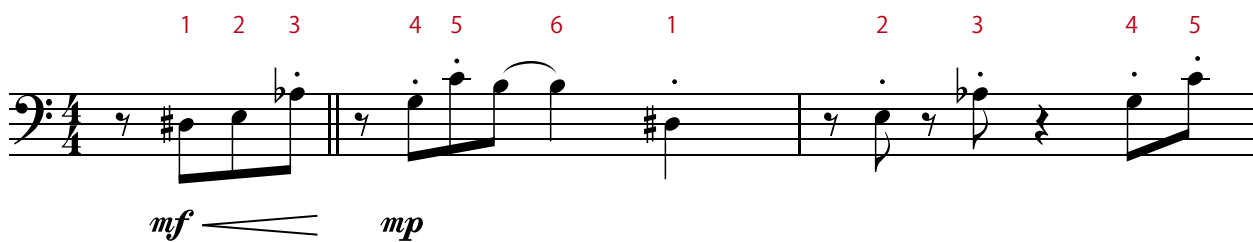
2 3 4 5 6 7 8

The third staff of music for the Tuba part is written in bass clef. It contains seven notes: B2 (fingering 2), C3 (fingering 3), D3 (fingering 4), E3 (fingering 5), F3 (fingering 6), G3 (fingering 7), and A3 (fingering 8). The notes are written as eighth notes.

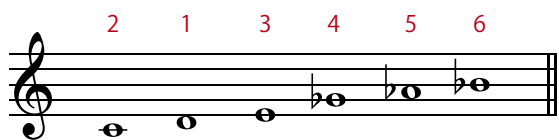
Trombone



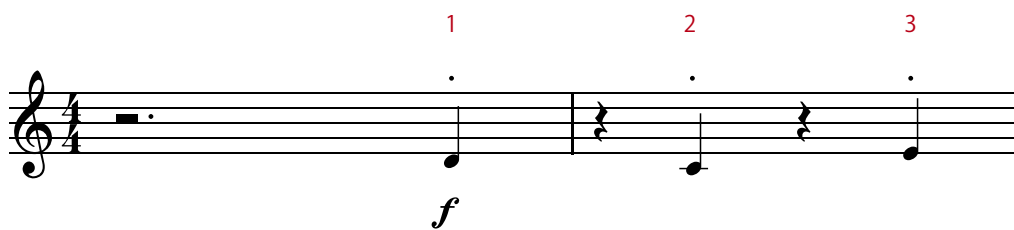
♩ = 120



Horn



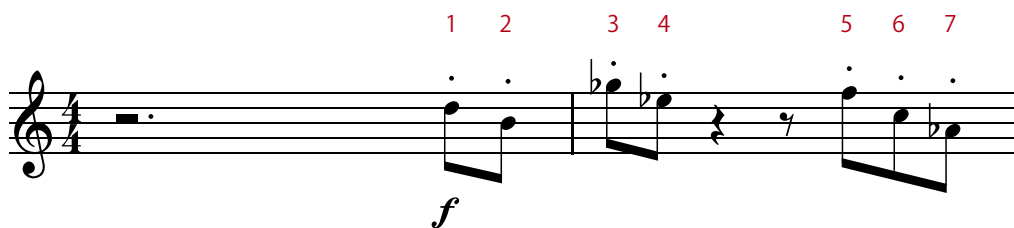
♩ = 120



Trumpet - 2



♩ = 120



Trumpet - 1



♩ = 120

