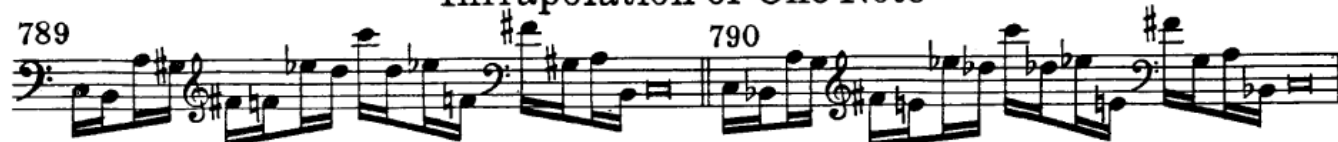




Ultrapolation of One Note



Infrapolation of One Note



Infra-Ultrapolation



Inter-Infrapolation

796

797

798

799

This section contains four measures of music, numbered 796 through 799. Each measure is written on a grand staff with a bass clef on the left and a treble clef on the right. The music features a complex sequence of notes, including many accidentals (sharps and flats), and is characterized by a dense, chromatic texture. The notes are often beamed together in groups of four or six, suggesting a fast tempo or a specific rhythmic pattern. The key signature is not explicitly shown but appears to have multiple sharps and flats.

Inter-Infra-Interpolation

800

801

802

803

This section contains four measures of music, numbered 800 through 803. The notation continues on grand staves. The complexity of the music increases, with more frequent use of accidentals and more intricate rhythmic groupings. The overall effect is one of intense chromaticism and harmonic tension.

Ultra-Infra-Interpolation

804

This section contains a single measure of music, numbered 804. The notation is consistent with the previous sections, featuring a grand staff with complex chromatic patterns and many accidentals.

Inter-Ultrapolation

805

This section contains a single measure of music, numbered 805. The notation is consistent with the previous sections, featuring a grand staff with complex chromatic patterns and many accidentals.